

# THE HARDING

The two-story foyer with dual stair cases leads to the two-story family room with fireplace.

The large formal dining room and spacious living room flank the foyer.

The private study includes large double doors.

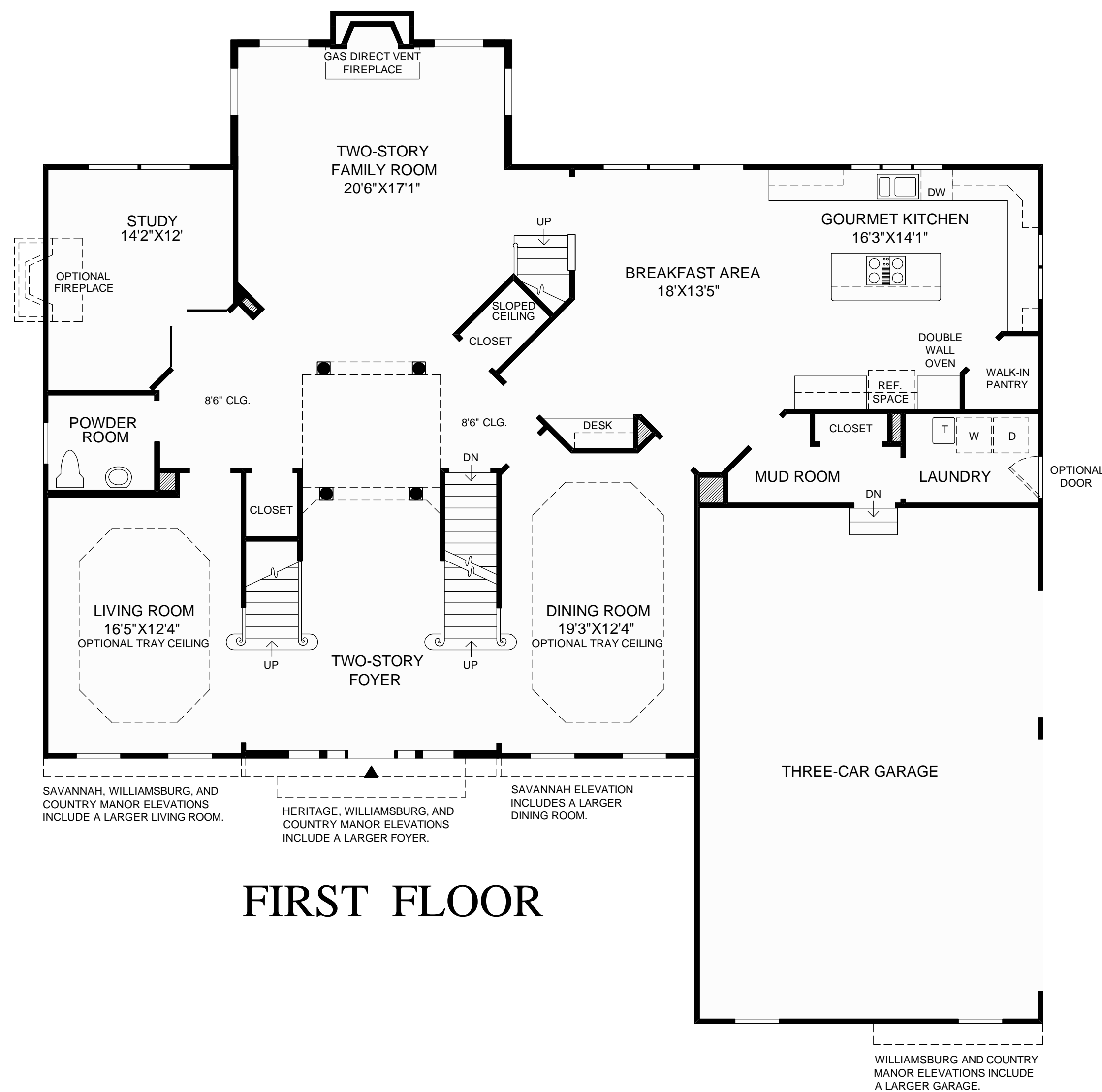
The expansive kitchen which includes a walk-in pantry and large island, opens to a large sunlit breakfast area.

The master bedroom suite includes a private den, two large walk-in closets and a master bath with Roman tub, dual sinks, and a private toilet.

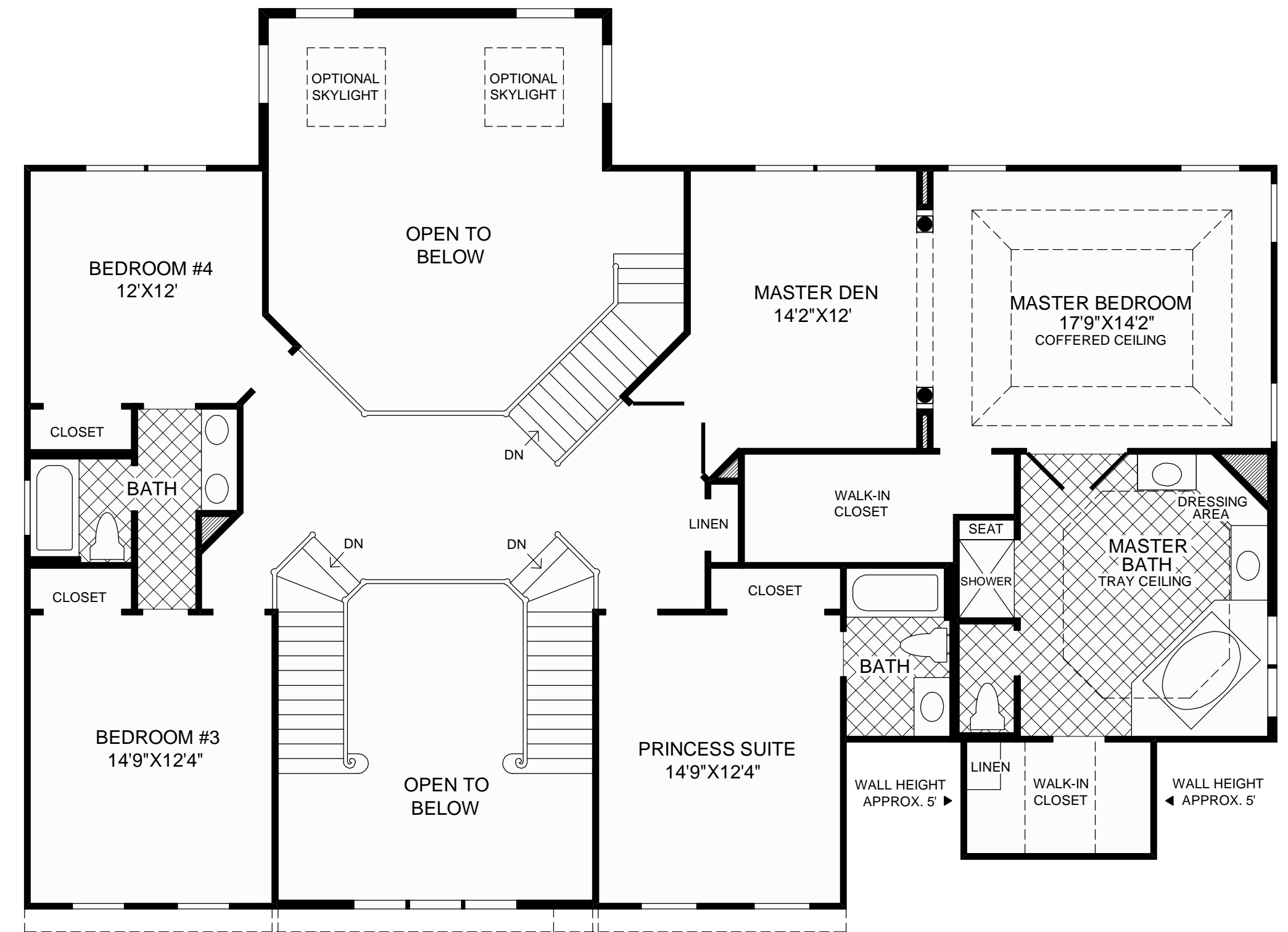
Nine-foot ceilings throughout the first floor and second floor.

4 bedrooms, 3½ baths.

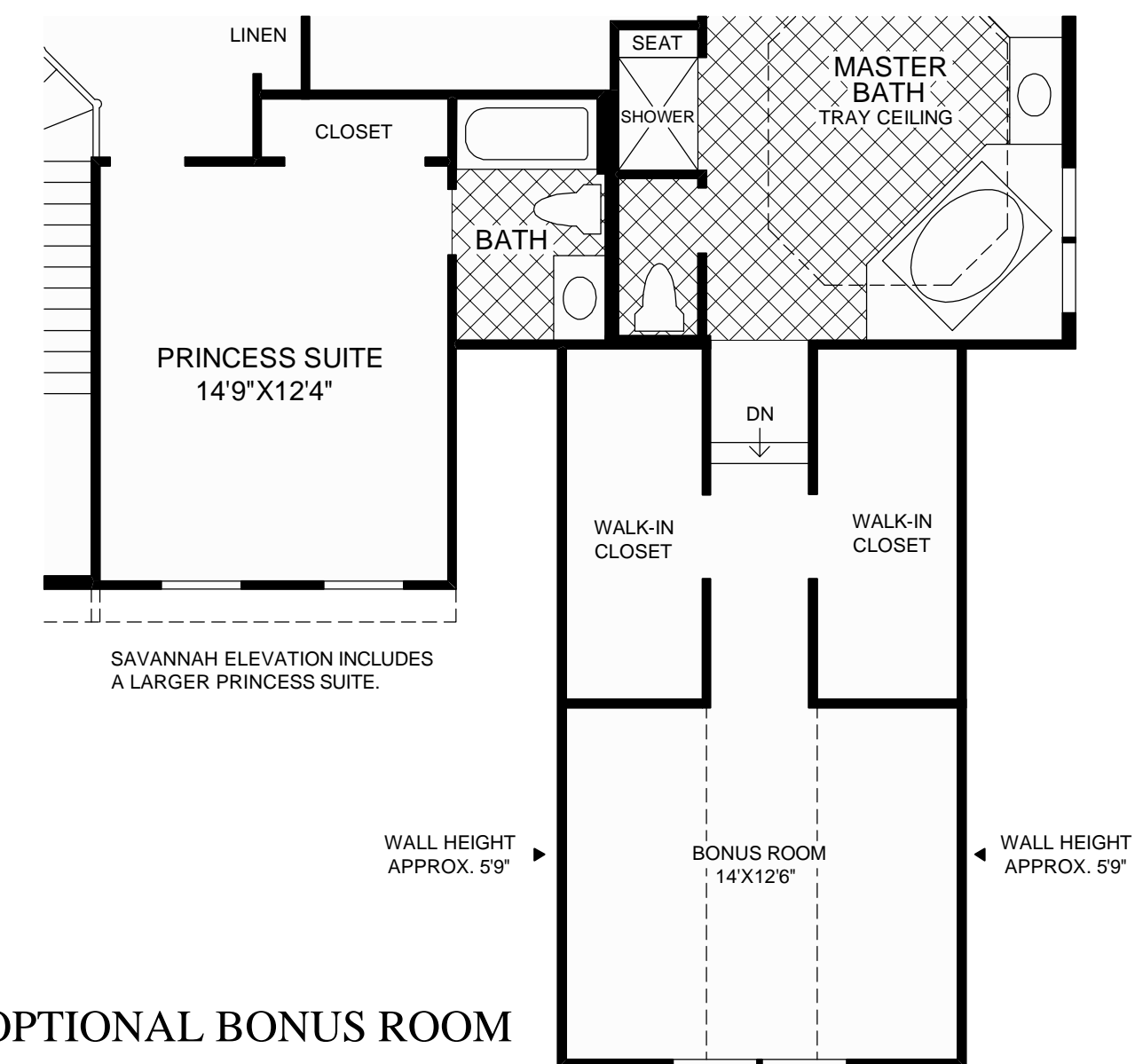
Included three-car garage.



## FIRST FLOOR



## SECOND FLOOR



## OPTIONAL BONUS ROOM

All dimensions are approximate, shown to the maximum dimensions of each room, and are subject to field variation. Dimensions should not be used to calculate room square footage. Some windows, exterior features, ceiling heights, and floor plans may vary with elevations. Some features may also vary from community to community. Please consult a Sales Representative for details. Options purchased must be specified in Exhibit B.

(NC-LREX/21529) 0418 ©2008 TOLL BROTHERS, INC. (HARDING 802)

**Toll Brothers**  
America's Luxury Home Builder™  
tollbrothers.com



The floor plans and elevations of Toll Brothers homes are copyrighted. We have enforced and will continue to enforce our federal copyrights to protect the investment of our home buyers.

This insert was produced using recycled products. ♻️