

THE KESWICK II

The two-story foyer leads to a double turned staircase.

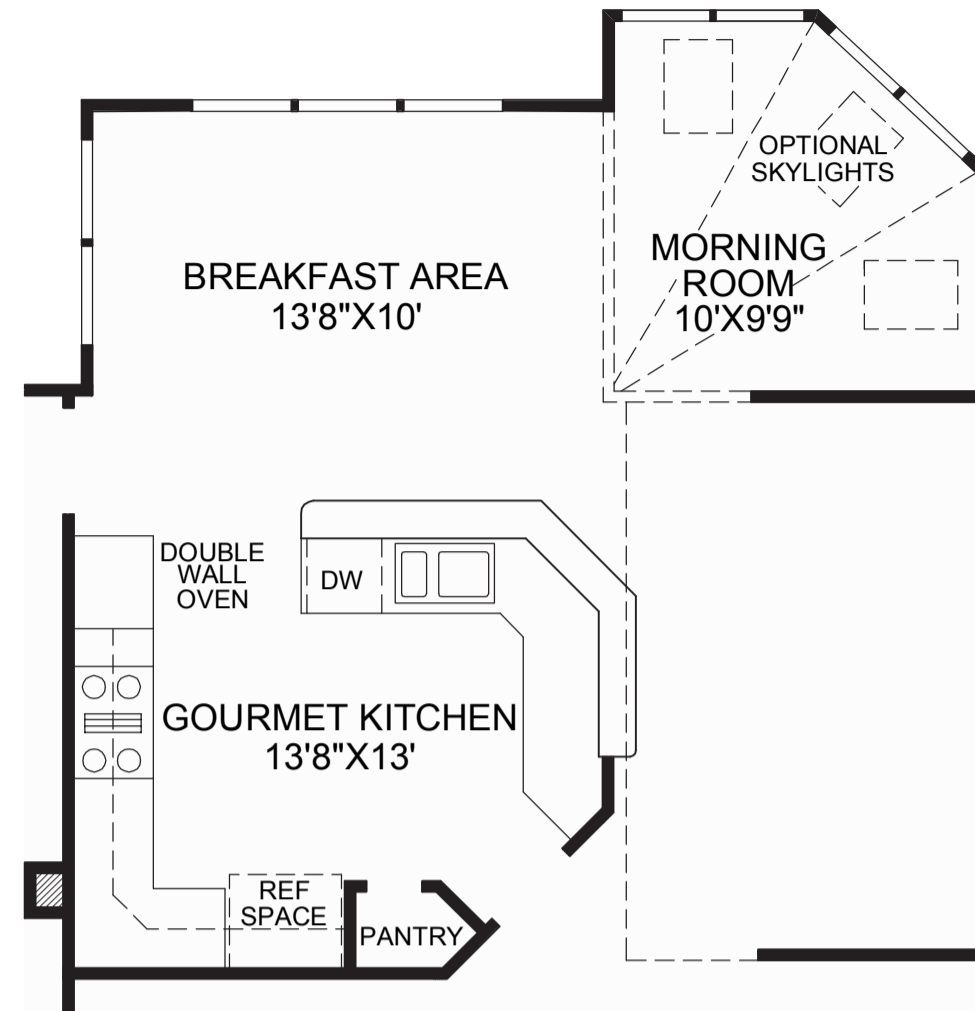
The living room is adjacent to the dining room for convenient entertaining.

A spacious kitchen is adjoined by a breakfast area.

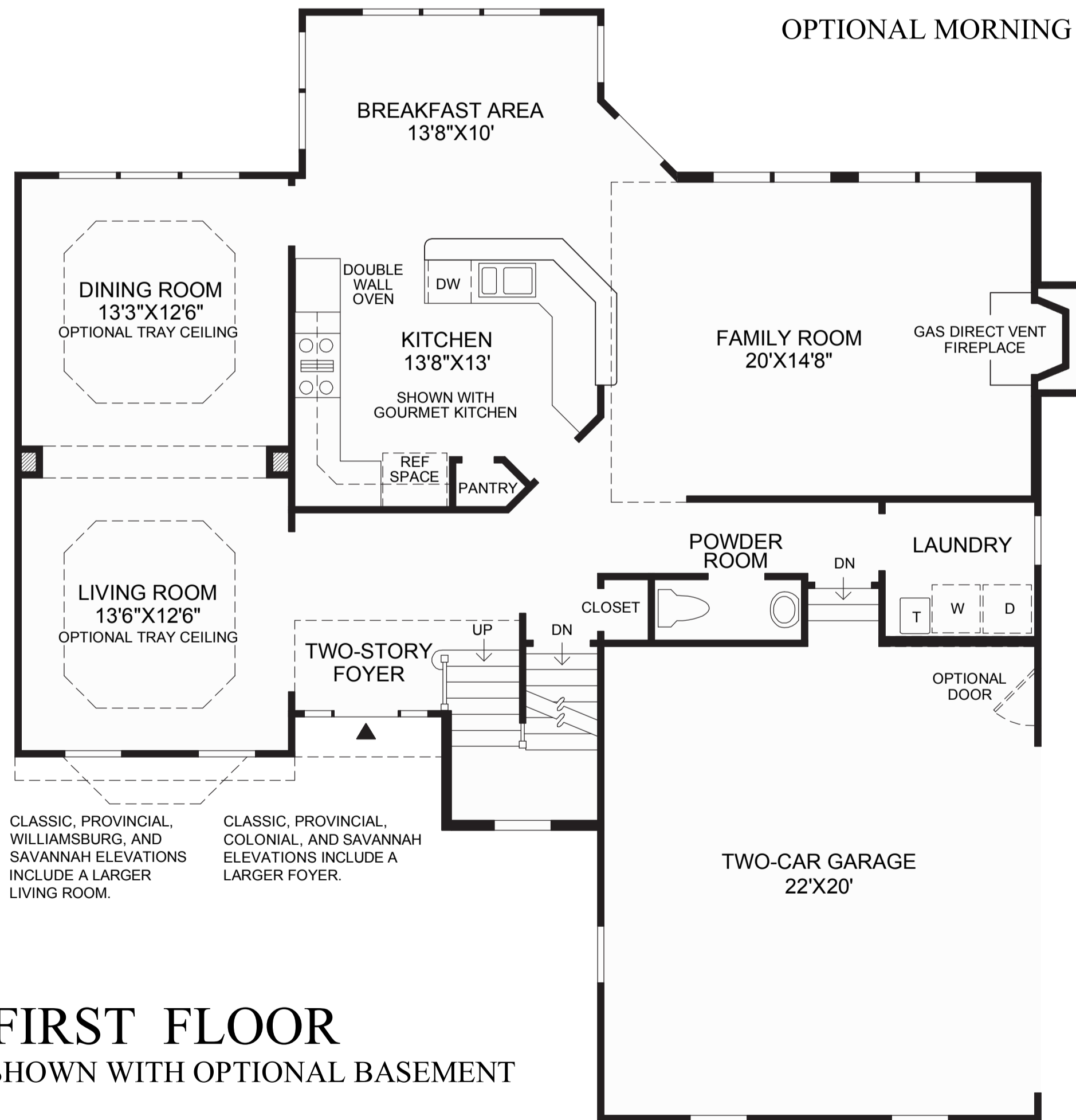
The two-story family room has an array of windows and a gas direct vent fireplace.

The master bedroom incorporates a large walk-in closet and master bath, creating an elegant and comfortable space.

4 bedrooms, 2 1/2 baths.



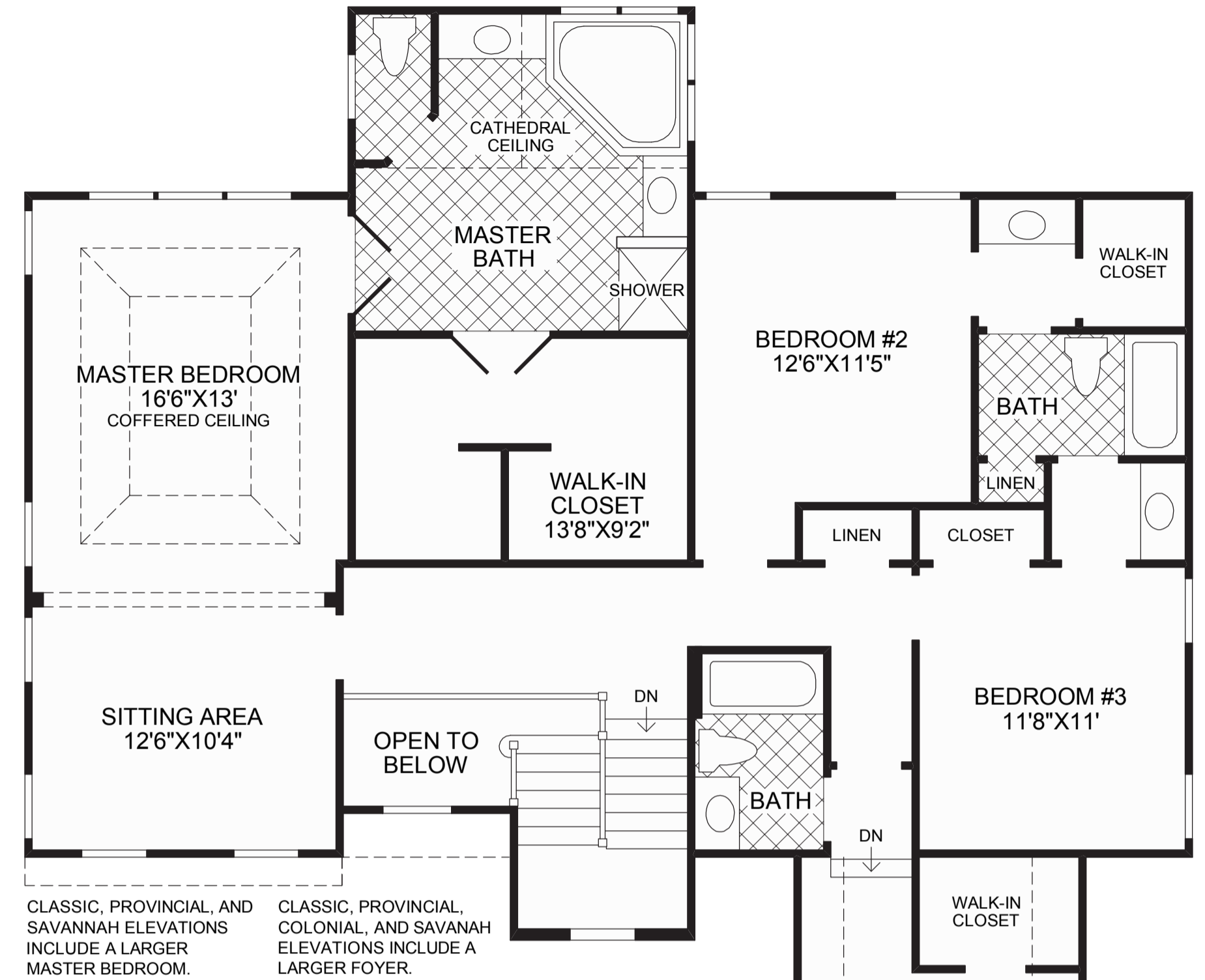
OPTIONAL MORNING ROOM



CLASSIC, PROVINCIAL, WILLIAMSBURG, AND SAVANNAH ELEVATIONS INCLUDE A LARGER LIVING ROOM.

CLASSIC, PROVINCIAL, COLONIAL, AND SAVANNAH ELEVATIONS INCLUDE A LARGER FOYER.

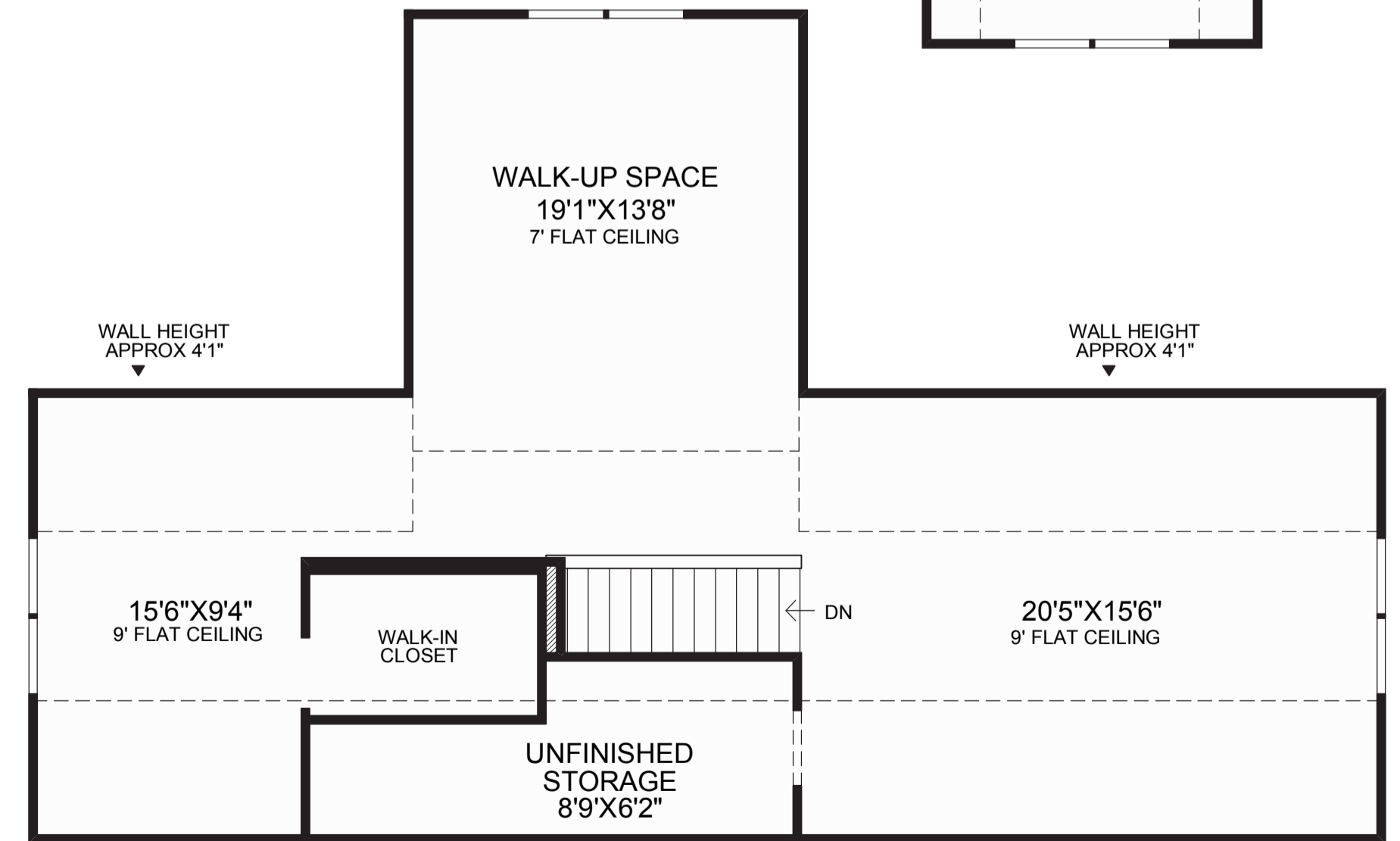
FIRST FLOOR
SHOWN WITH OPTIONAL BASEMENT



CLASSIC, PROVINCIAL, AND SAVANNAH ELEVATIONS INCLUDE A LARGER MASTER BEDROOM.

CLASSIC, PROVINCIAL, COLONIAL, AND SAVANNAH ELEVATIONS INCLUDE A LARGER FOYER.

SECOND FLOOR



WALL HEIGHT APPROX 4'1"

WALL HEIGHT APPROX 4'1"

WALL HEIGHT APPROX 4'1"

OPTIONAL FINISHED THIRD FLOOR WALK-UP SPACE

All dimensions are approximate, shown to the maximum dimensions of each room, and are subject to field variation. Dimensions should not be used to calculate room square footage. Some windows, exterior features, ceiling heights, and floor plans may vary with elevations. Some features may also vary from community to community. Please consult a Sales Representative for details. Options purchased must be specified in Exhibit B.

